

# Case Study: Diabetic retinopathy – type 2 diabetes mellitus

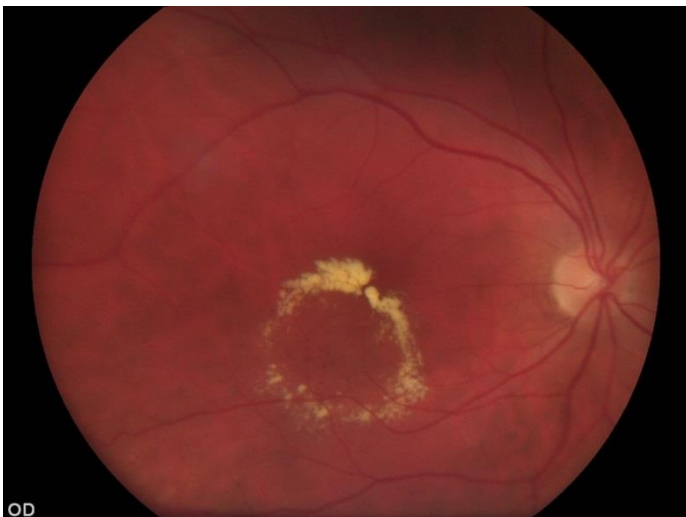
Prof. Eija Vesti, MD, PhD, FEBO  
Chief Physician, Ophthalmology Department  
Turku University Hospital, Finland

## History

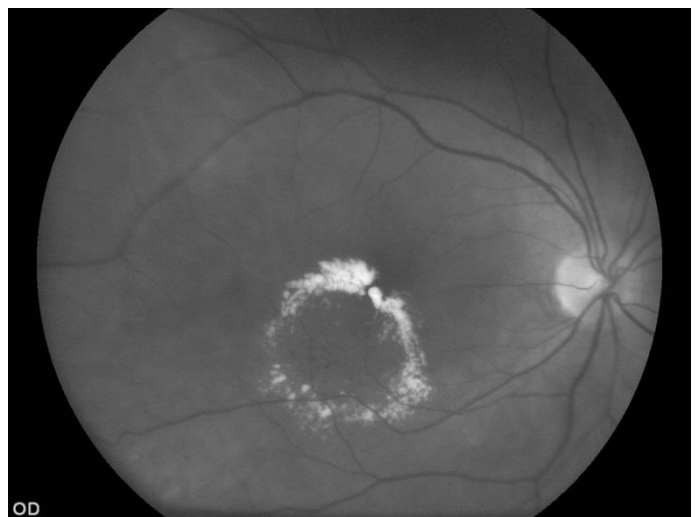
A 49-year-old female patient had experienced severe and acute headache with flashing lights and blurred vision (visus 0,4). The patient had previously been diagnosed with hypertension and type 2 diabetes.

## Examination

After visiting a private physician, the patient was referred to Turku University Hospital's ophthalmology clinic for further examination. After pupil dilation, the patient was examined with Smartscope PRO hand-held retinal camera. A lipid exudate ring with macular oedema approximately 3 disc diameters in size was detected at lower temporal side from the fovea in the right eye. Also dot haemorrhages and micro aneurysms were detected in the center of the circinate ring.



Picture 1: Color fundus image showing ring-shaped exudates.



Picture 2: In the red-free image the leaking microaneurysms in the center of the exudate ring can be seen more clearly.