

Case Study: Retinoblastoma

Dr. Gregor Willerding, DRK Klinik Westend

Berlin, Germany

May 2014

Study was done under general anesthesia in supine position. Both Smartscope EY4 and FA were used in the study.

Patient information

Sex/Age	Male/1 year old (Born March 2013)
Weight	9 kg
Nationality	Russian
Reason for FA study	Patient had 3 weeks before an intra-arterial chemotherapy. This was a check- up of response of retinal vasculature to intra-arterial chemo.
Known eye diseases	Unilateral retinoblastoma in left eye. Prior retinal detachment.

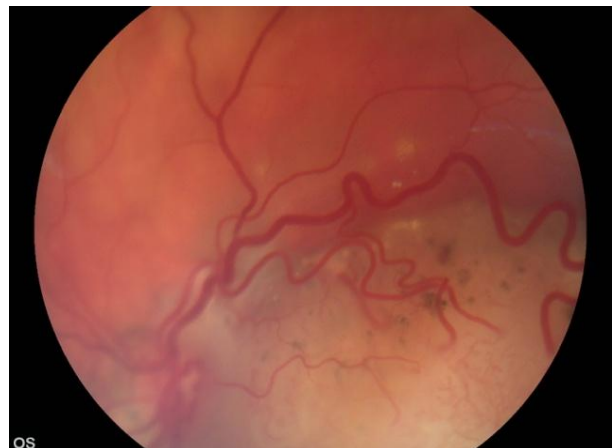
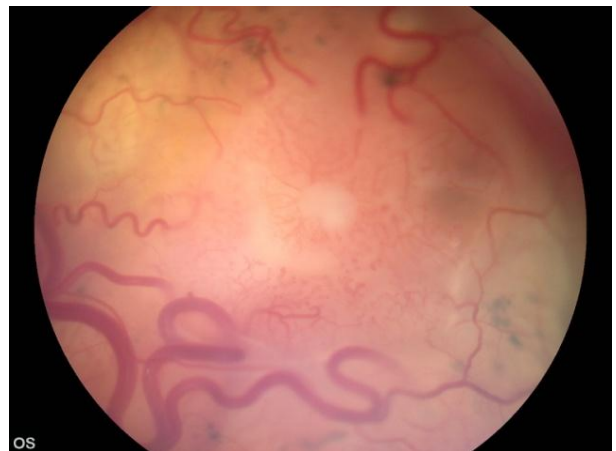
Camera and Fluorescein setup

Liquid type/amount	Alcon fluorescein 10%/1 ml
Camera brightness setting	EY4: starting level 5, later changed to level 2 white/white FA: Images were taken with different levels: 3→5→7 (2min 13 s)→5 (7 min)→4
Focus mode/diopter setting	EY4: Auto/peripheral images of tumor with Manual and +5 FA: Auto

Conclusions from study

Intra-arterial chemotherapy where treatment is done directly in ophthalmic artery was done for the first time on this patient prior to the check-up. The response to chemotherapy was good.

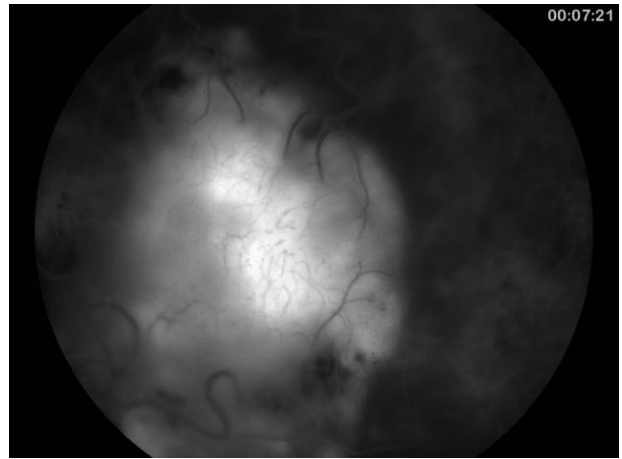
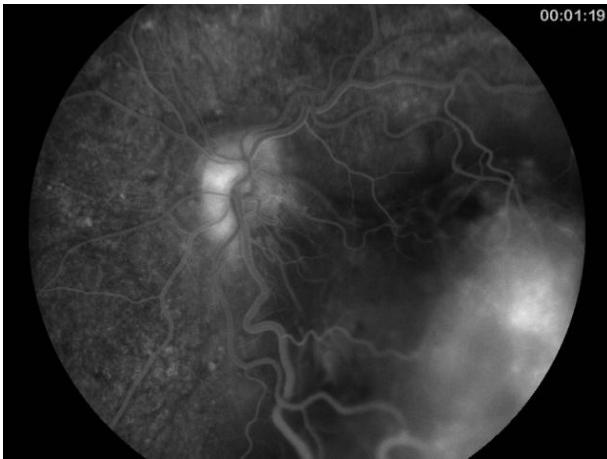
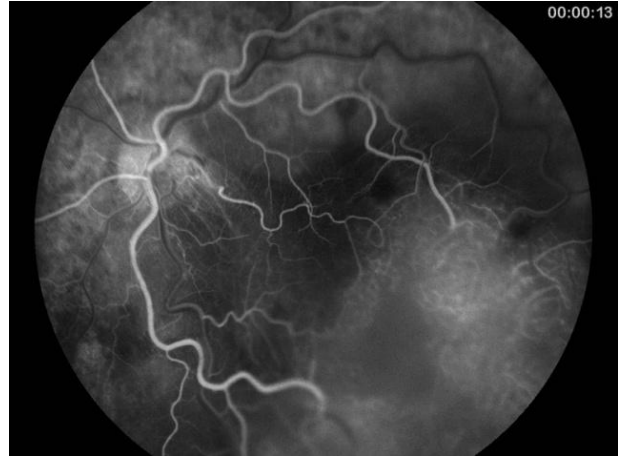
Images taken before treatment



Smartscope FA

New innovation in Fluorescein Angiography

Images taken after treatment



Images from healthy eye

