

Case Study: Nevus – choroidal melanoma suspect

Prof. Eija Vesti, MD, PhD, FEBO
Chief Physician, Ophthalmology Department
Turku University Hospital, Finland

History

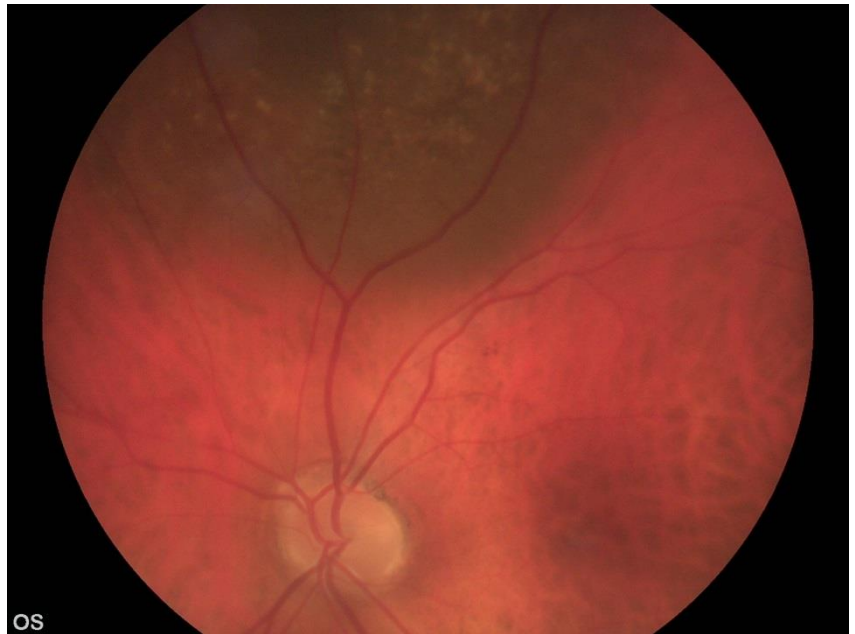
The patient is a 77-year-old male with hypertension and previous aortic valve operation.

Examination

During a routine examination at a private clinic, a large nevus was detected in the superior arcade of the left eye.

The patient was referred to Turku University Hospital for further examination. After pupillary dilation, the patient was examined with Smartscope PRO hand-held retinal camera.

A dark pigmented nevus, with slightly raised appearance with some drusen on the surface was imaged. No orange pigment was detected. The thickness measured with ultrasound was 2.0 mm. The patient was followed-up as a melanoma suspect.



Picture 1: A large nevus in the superior arcade of the left eye is clearly visible despite mild cataract.

Conclusion

After 6 months no change in thickness or size of the nevus was detected. The clinical follow-up continues with 6-month intervals as a melanoma suspect.