

# OPTOMED HALO

Automated Portable Retinal Camera



3D tracking



Dicom



Portable

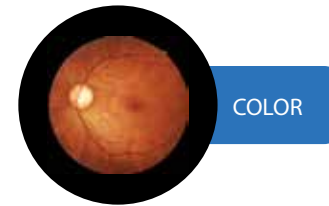


Montage

# OPTOMED HALO

## Automated Portable Retinal Camera

- Fully automatic non-mydriatic retinal camera:**  
High success rate with minimal operator training.
- Portable:**  
Light weight and small footprint allow transporting the camera easily.
- Flexible:**  
Can be connected to a Windows 10 PC  
Allows operating the camera with a social distance to patient.
- Superior optical performance:**
  - 12 MP high resolution sensor
  - 45 deg Field of View
  - 4.0 mm minimum pupil size
- Variety of practical features:**
  - 10 internal fixation targets
  - Anterior imaging
  - Cup-to-disc measurement
- Easy connection to software solutions**
  - Optional AI integration
  - Integrable to your clinic management software



Type	Digital non-mydratric retina camera
Type of photography	Color, digital red-free
Image format	JPEG, PNG, DICOM (optional)
Field of view	45 degrees
Minimum pupil size	4.0 mm
Working distance	25 mm
Focus adjustment range	-15D to 10D (without compensation lens) -30D to -10D or +5D to +30D (with compensation lens)
Flash intensity	10 levels, can be set manually
Light source	Observation light source: Infrared LED Flash light source: White LED
Image	12 MP
Montage	Built-in Montage up to 3 images
Eye fixation	Internal 10 points
Alignment	Automatic 3D tracking
Chinrest	Motorized
Interface	USB 2.0
Power input	AC 100V to 240V, 50/60 Hz, auto selected
Dimensions (WxDxH)	240 (W) x 320 (D) x 330 (H) mm
Weight	12 kg

